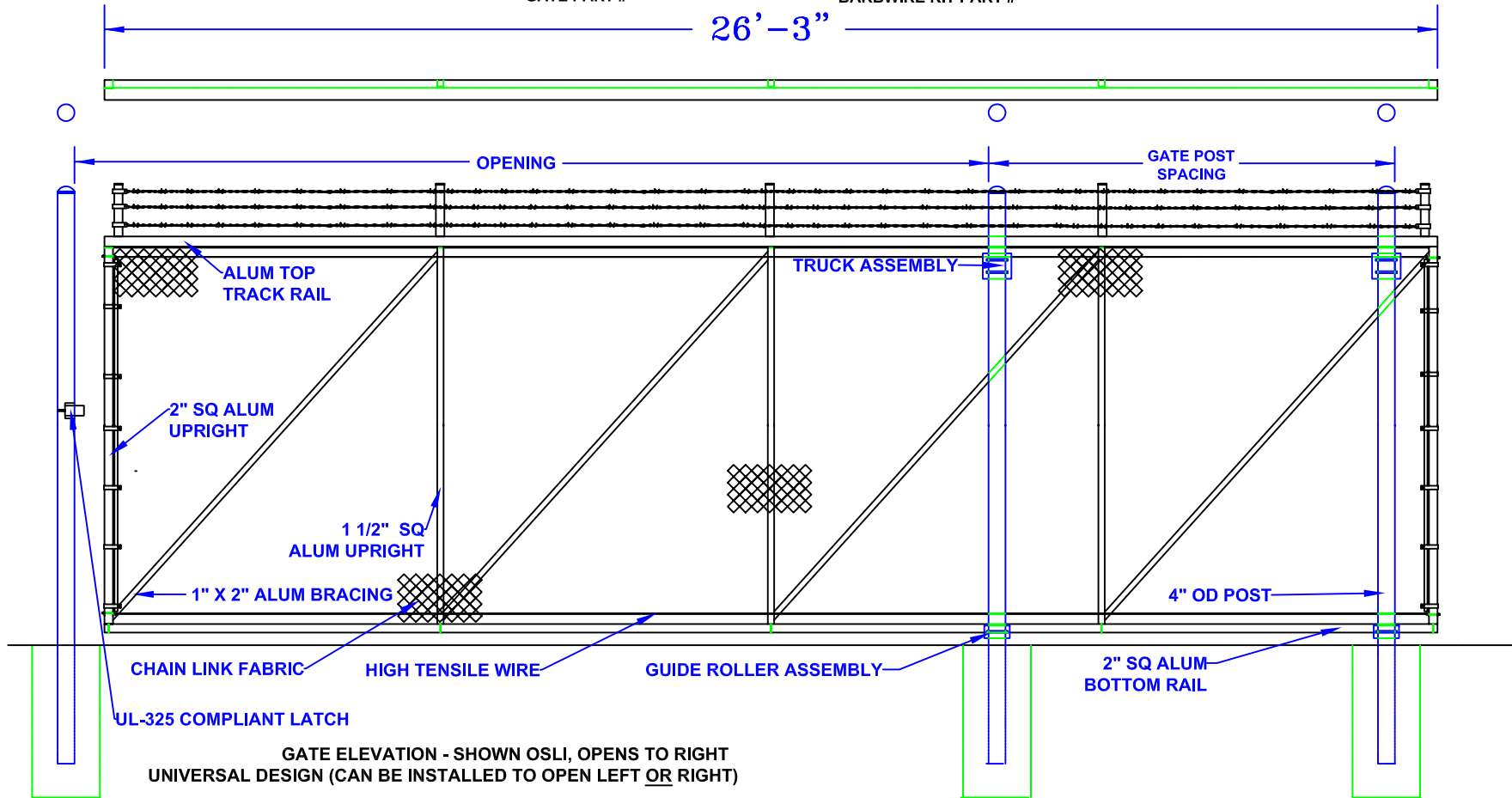


15' - 18' x 8' ALUMINUM SLIDE GATE

(ASG-188) (ASG-BW18)

GATE PART #

BARBWIRE KIT PART #



- Notes:
- SPECIFICATIONS CAN BE CHANGED BY SHARON FENCE COMPANY ONLY.
 - FOOTING TO BE (4)X POST WIDTH, MIN DEPTH TO BE 36" [914 MM].
 - GATES MAY BE MANUALLY OR ELECTRICALLY OPERATED, HARDWARE WILL VARY.
 - GATES TABULATED ARE UL-325 COMPLIANT.
 - GATES ARE UNIVERSAL (OPEN TO LEFT OR RIGHT).
 - TOP TRACK AND RAIL: ENCLOSED 1-PC ALUMINUM (6061-T6) EXTRUSION (3.83 LBS PER LF)
 - 1" x 2" ALUMINUM DIAGONAL BRACING WELDED TO 2" SQUARE ALUMINUM UPRIGHTS.

OPENING	GATE POST SPACING
15'	11'-0"
16'	10'-0"
17'	9'-0"
18'	8'-0"

Approved By: _____

Date: _____