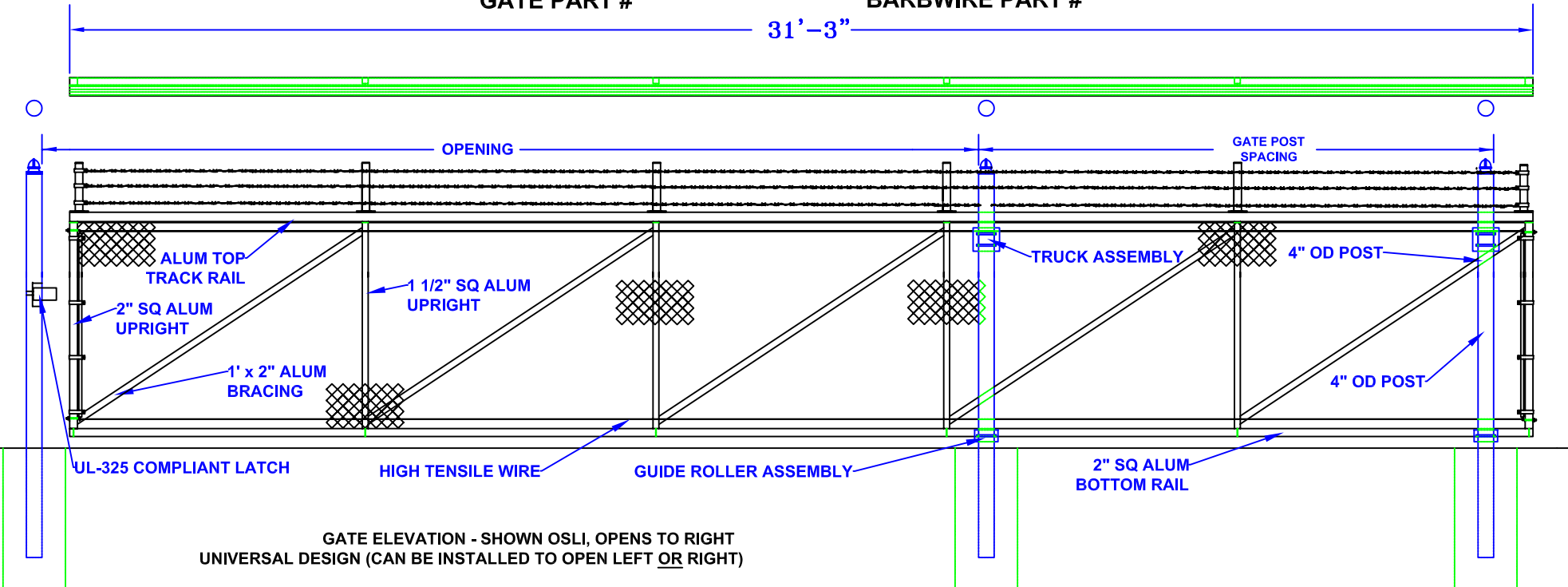


19'-22' X 5' HIGH ALUMINUM SLIDE GATE (ASG-225) (ASG-BW22)

GATE PART # BARBWIRE PART #



GATE ELEVATION - SHOWN OSLI, OPENS TO RIGHT
UNIVERSAL DESIGN (CAN BE INSTALLED TO OPEN LEFT OR RIGHT)

Notes: 1. SPECIFICATIONS CAN BE CHANGED BY SHARON FENCE COMPANY ONLY. 2. FOOTING TO BE (4)X POST WIDTH. MIN DEPTH TO BE 36" [914 MM]. 3. GATES MAY BE MANUALLY OR ELECTRICALLY OPERATED. HARDWARE WILL VARY. 4. GATES TABULATED ARE UL-325 COMPLIANT. 5. GATES ARE UNIVERSAL (OPEN TO LEFT OR RIGHT). 6. TOP TRACK AND RAIL: ENCLOSED 1-PC ALUMINUM (6061-T6) EXTRUSION (3.83 LBS PER LF) 7. 1" X 2" ALUMINUM DIAGONAL BRACING WELDED TO 2" SQUARE ALUMINUM UPRIGHTS.	OPENING	GATE POST SPACING	Approved By: _____ Date: _____
	19'	12'-0"	
	20'	11'-0"	
	21'	10'-0"	
	22'	9'-0"	