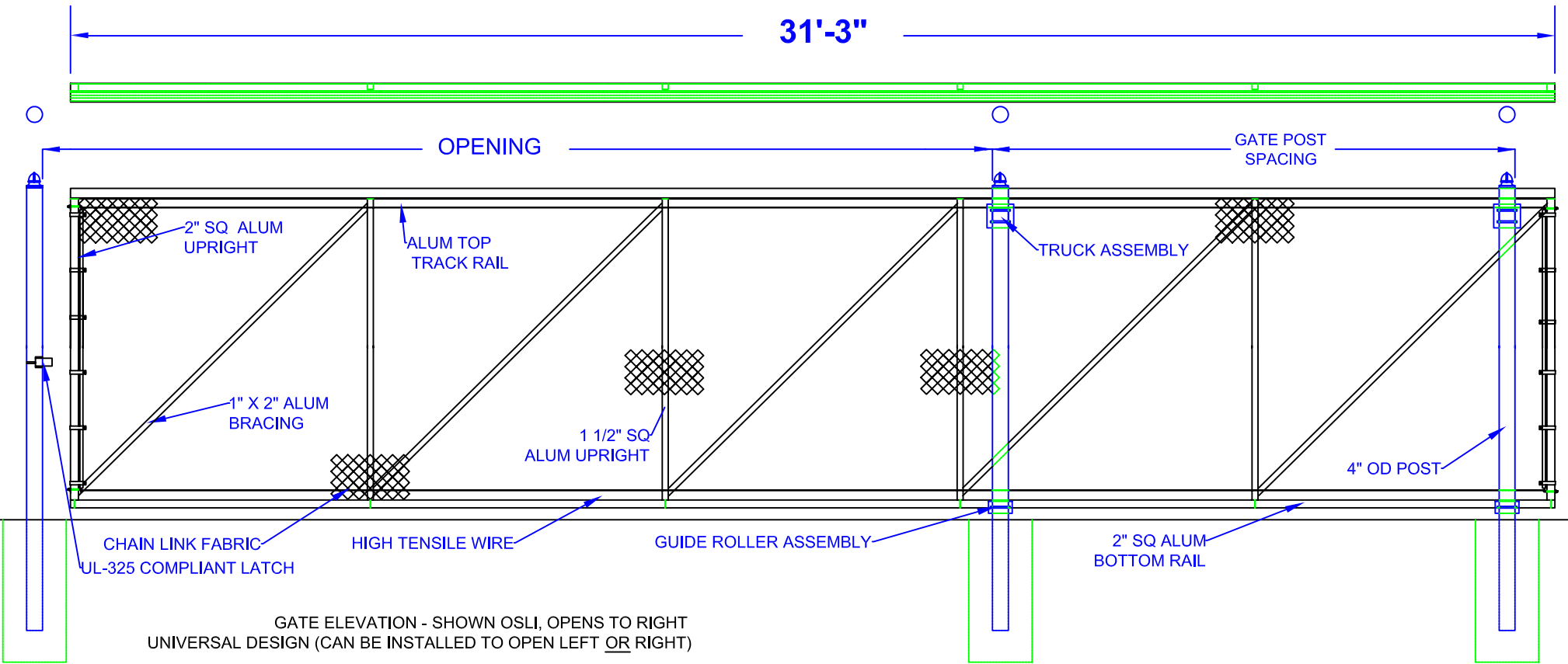


19' - 22' X 7' ALUMINUM SLIDE GATE (ASG-227)

GATE PART #



GATE ELEVATION - SHOWN OSLI, OPENS TO RIGHT
UNIVERSAL DESIGN (CAN BE INSTALLED TO OPEN LEFT OR RIGHT)

- Notes:
- SPECIFICATIONS CAN BE CHANGED BY SHARON FENCE COMPANY ONLY.
 - FOOTING TO BE (4)X POST WIDTH. MIN DEPTH TO BE 36" [914 MM].
 - GATES MAY BE MANUALLY OR ELECTRICALLY OPERATED. HARDWARE WILL VARY.
 - GATES TABULATED ARE UL-325 COMPLIANT.
 - GATES ARE UNIVERSAL (OPEN TO LEFT OR RIGHT).
 - TOP TRACK AND RAIL: ENCLOSED 1-PC ALUMINUM (6061-T6) EXTRUSION (3.83 LBS PER LF)
 - 1" x 2" ALUMINUM DIAGONAL BRACING WELDED TO 2" SQUARE UPRIGHTS.

OPENING	GATE POST SPACING
19'	12'-0"
20'	11'-0"
21'	10'-0"
22'	9'-0"

Approved By: _____
Date: _____