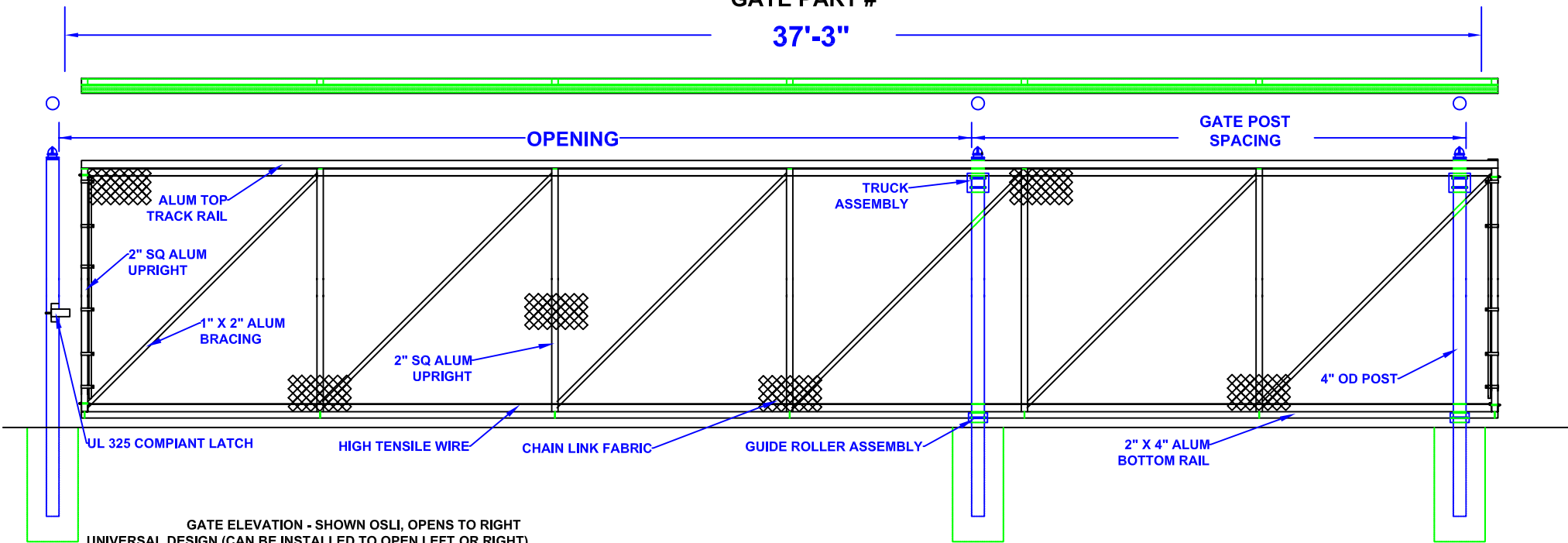


# 23'-26' X 7' HIGH ALUMINUM SLIDE GATE (ASG-267)

GATE PART #

37'-3"



GATE ELEVATION - SHOWN OSLI, OPENS TO RIGHT  
UNIVERSAL DESIGN (CAN BE INSTALLED TO OPEN LEFT OR RIGHT)

- Notes.
1. SPECIFICATIONS CAN BE CHANGED BY SHARON FENCE COMPANY ONLY.
  2. FOOTING TO BE (4)X POST WIDTH. MIN DEPTH TO BE 36" [914 MM].
  3. GATES MAY BE MANUALLY OR ELECTRICALLY OPERATED. HARDWARE WILL VARY.
  4. GATES TABULATED ARE UL-325 COMPLIANT.
  5. GATES ARE UNIVERSAL (OPEN TO LEFT OR RIGHT).
  6. TOP TRACK AND RAIL: ENCLOSED 1-PC ALUMINUM (6061-T6) EXTRUSION (3.83 LBS PER LF) REINFORCED BY WELDING AN ADDITIONAL 2" SQ. ALUMINUM LATERAL SUPPORT RAIL.
  7. 1" X 2" ALUMINUM DIAGONAL BRACING WELDED TO 2" SQUARE UPRIGHTS.

| OPENING | GATE POST SPACING |
|---------|-------------------|
| 23'     | 14'-0"            |
| 24'     | 13'-0"            |
| 25'     | 12'-0"            |
| 26'     | 11'-0"            |

Approved By: \_\_\_\_\_

Date: \_\_\_\_\_