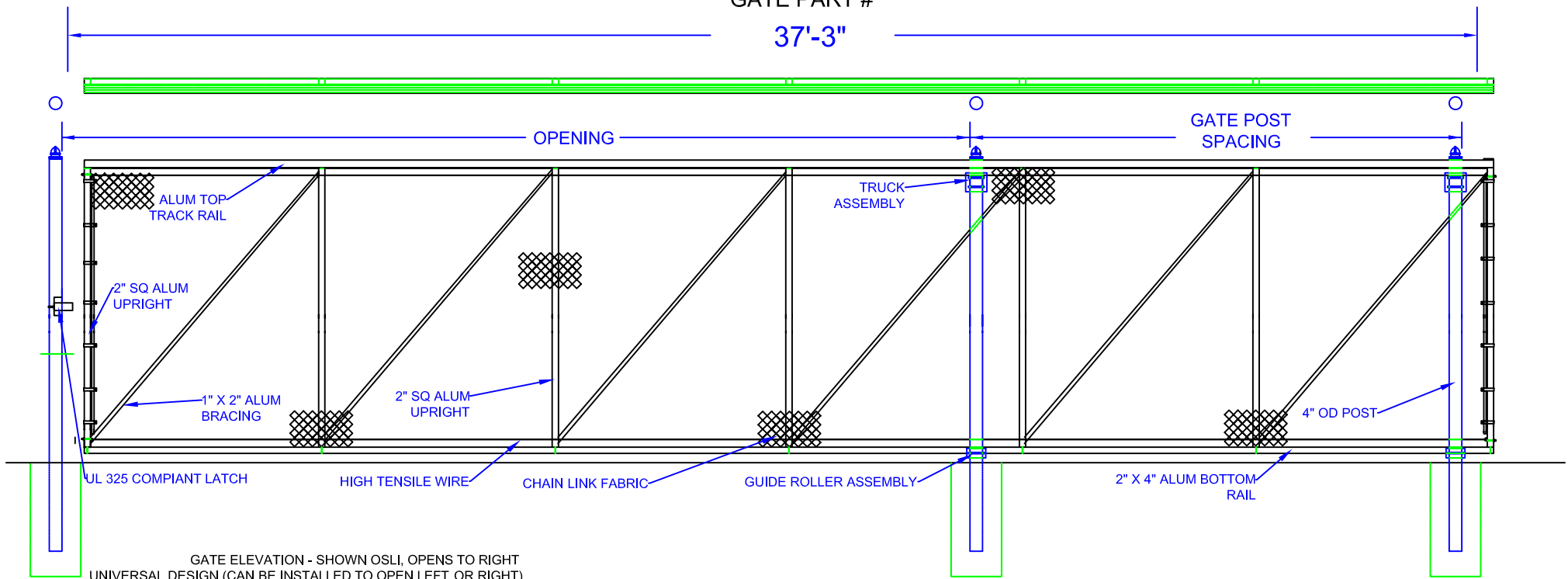


# 23'-26' X 8' HIGH ALUMINUM SLIDE GATE (ASG-268)

GATE PART #

37'-3"



GATE ELEVATION - SHOWN OSLI, OPENS TO RIGHT  
UNIVERSAL DESIGN (CAN BE INSTALLED TO OPEN LEFT OR RIGHT)

Notes:

1. SPECIFICATIONS CAN BE CHANGED BY SHARON FENCE COMPANY ONLY.
2. FOOTING TO BE (4)X POST WIDTH. MIN DEPTH TO BE 36" [914 MM].
3. GATES MAY BE MANUALLY OR ELECTRICALLY OPERATED. HARDWARE WILL VARY.
4. GATES TABULATED ARE UL-325 COMPLIANT.
5. GATES ARE UNIVERSAL (OPEN TO LEFT OR RIGHT).
6. TOP TRACK AND RAIL: ENCLOSED 1-PC ALUMINUM (6061-T6) EXTRUSION (3.83 LBS PER LF) REINFORCED BY WELDING AN ADDITIONAL 2" SQ. ALUMINUM LATERAL SUPPORT RAIL.
7. 1" X 2" ALUMINUM DIAGONAL BRACING WELDED TO 2" SQUARE UPRIGHTS.

OPENING

GATE POST SPACING

23'

14'-0"

24'

13'-0"

25'

12'-0"

26'

11'-0"

Approved By: \_\_\_\_\_

Date: \_\_\_\_\_